

A brief history of S. Margaret's Church.....

After the ending of the General Strike of 1926 all the Rhymney Valleys' collieries had been idle for seven months with times exceedingly hard. Early in 1927, the then members of St. Margaret's Church discussed an idea that a permanent building should be erected in the existing Church grounds. This idea had the full support of the curate of St. Margaret's, the Reverend George Pritchard, and also received the approval of the Rector, Canon T. Jesse Jones.

Various fund raising schemes were discussed and the scheme most widely accepted was known as the "Penny Brick Scheme". The buying of the bricks continued throughout the remainder of Reverend Pritchard's curacy at St. Margaret's, throughout the curacy of the Reverend White and during the short curacy of the Reverend Davies. By the 1930's the buying of the bricks still continued. Sadly, around this time, the Reverend Canon T. Jesse Jones passed away and a new Rector for the Parish of Gelligaer had to be appointed with the new Rector being the Reverend J. O. Williams who came to the Parish of Gelligaer, from the Llantrisant area. On hearing about the idea of a permanent church building for Gilfach, and that the amount for the idea had reached the magnificent sum of £3000 the Rector said "We will wait no longer, but build."

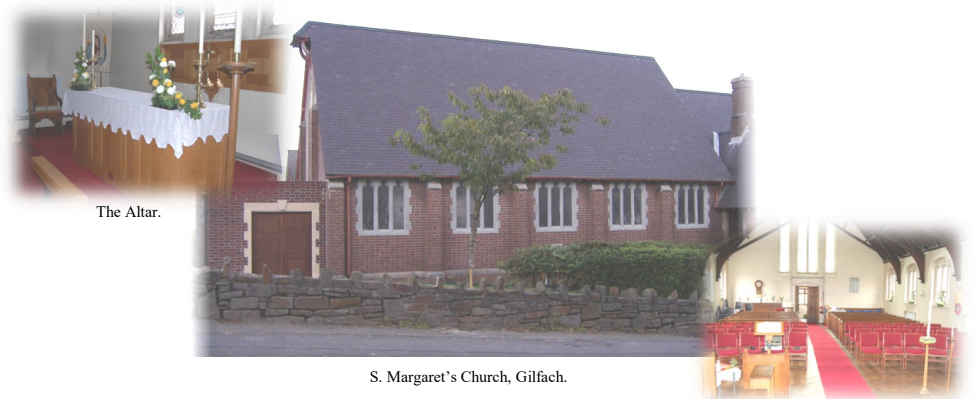
The current St Margaret's church is the third church on these grounds in Gilfach. Built in the early 1930s, its Dedication Day was November 29th 1933. The first St Margaret's church was a small wooden church built at the top of Margaret Street in the early 20th century. The second church was a corrugated metal church which later became the church hall. For a time, the three St. Margaret's churches were side by side, after the little wooden church was moved to the same grounds. Both the earlier churches have been demolished.

WELCOME TO S. MARGARET'S CHURCH, GILFACH.

We invite you to join us for our weekly services.

Sunday
9.30am Sung Eucharist

Wednesday
10am Holy Eucharist



Dear visitor,

Welcome to S. Margaret's Church, Gilfach.

This church is dedicated to S. Margaret of Antioch, a Christian martyr of the fourth century. Margaret is said to have been killed after refusing to renounce her Christian faith as demanded by the Roman Governor Olybrius when he asked her to marry him.

Devotion to S. Margaret grew after the Crusades and this Church, built in the 1930's from the donations of local people, stands as a testament to that Christian faith for which S. Margaret died and which continues to inspire us today.

We hope you enjoy your visit.

Fr. Gary Powell, Parish Priest.

Items of Interest ~ AROUND THE CHURCH



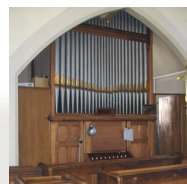
Laced Lords Prayer

A crocheted version the Lords prayer created by Mrs Agnus Burton a former Sunday school teacher in the church. Donated to the church in the 1960's.

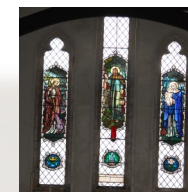


War Memorial Plaques

Situated on the north wall is the brass plaque given by the parishioners to commemorate those who during the great war died in the service of their country.



Pipe Organ



Stained Glass Windows

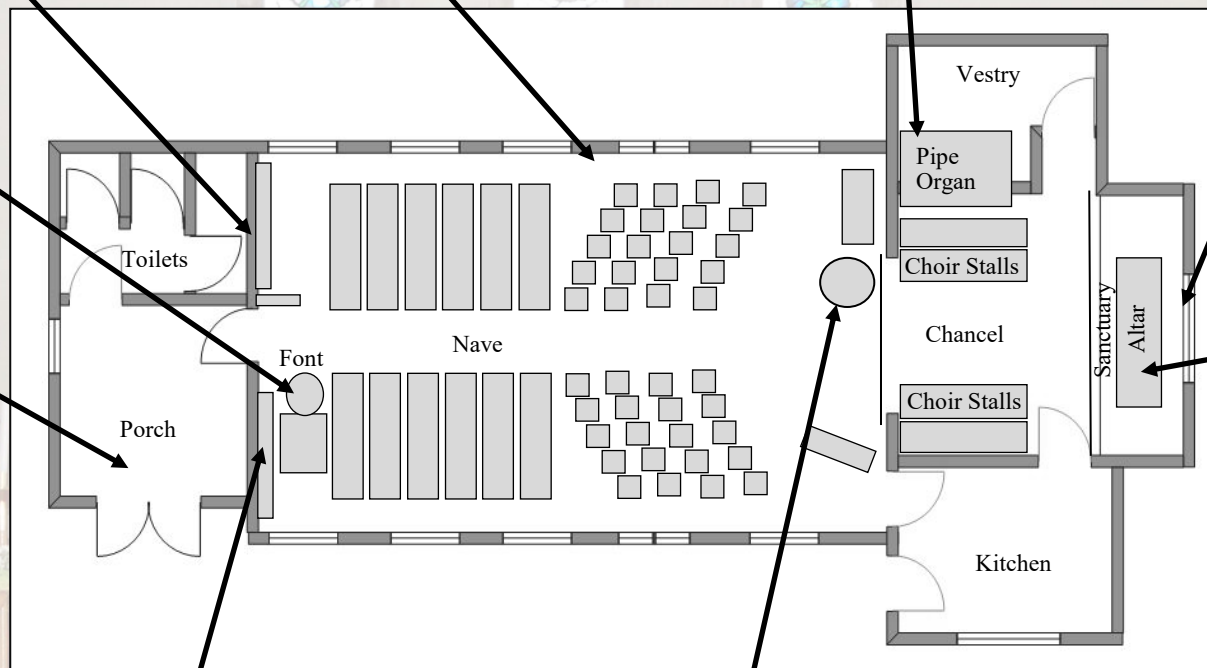
The panels of stained glass on the east wall depicts from left to right St. Margaret of Antioch, Jesus the Light of the World and The Nativity.

The centre panel is in memory of those who gave their lives during the 1914-18 war.



The Font

Fonts are often placed at or near the entrance to a church's nave to remind believers of their baptism as they enter the church to pray.



The Altar

The altar plays a central role in the celebration of the Holy Eucharist, with the bread and the wine for consecration being placed upon it.

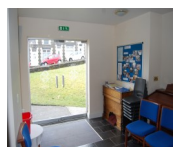


This Altar was given to S. Margaret's Church by Reginald and Laura Lacey on November 12th 1967.



Children's Altar Cross

The brass cross was a gift to the church by Mr and Mrs Fredrick Lucus in memory of their daughter Sylvia and also their son Brian who tragically died on 28th, November 1957. A special service was held at Lewis School Chapel on the 1st December 1957.



The Porch

Situated at the west end of the church the new entrance and porch which was added during the 1990's. Built to follow the style of brick work it also included modern double glass doors etched with the Church in Wales logo.

The Former Pulpit

The pulpit was originally situated to the left hand side of the chancel arch but unfortunately due to structural problems at its base it had to be removed in approximately 2010.



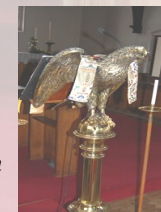
Brass Urn

This brass urn was presented to S. Margaret's church in fond memory by the Mother and Father of Lt WB Lloyd, who was sadly killed in action at Ypres on August 10th 1917.



Brass Lectern

A gift to St Margaret's Church from Margaret Ann Jones of the schoolhouse on the 25th anniversary of her blessed union in Holy Matrimony, November 22nd 1925.



Should you wish to find further information about the history of S. Margaret's Church, please visit our website www.parishofgelligaer.org.uk and click the history link found in the contents panel.